



# LEED Product Guide

---

January 2024 Update



**Green Badger**

[getgreenbadger.com](https://getgreenbadger.com)

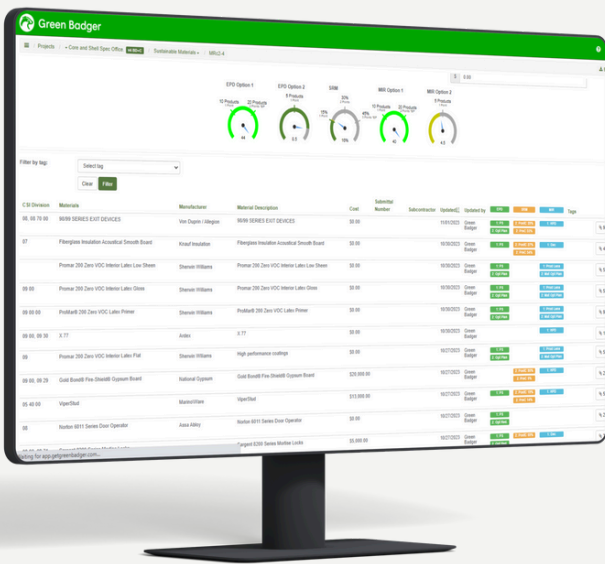


# Table of Contents

- Introduction..... 1**
- About this Guide..... 2**
- LEED Compliant Products - Option 1..... 3**
  - Insulation..... 4
  - Flooring..... 6
  - Gypsum Board..... 9
  - Ceiling Tile & Grid..... 10
  - Paint Products..... 11
  - Doors and Hardware..... 13
- LEED Compliant Products - Option 2..... 16**
  - EPD Option 2..... 17
  - MIR Option 2..... 19
- Summary..... 21**

## Introduction

It wouldn't be a day ending in "Y" if someone at Green Badger didn't have a conversation with a project team that resulted in the exasperated question of **"What the F@%K do I need to do to earn this credit?"**

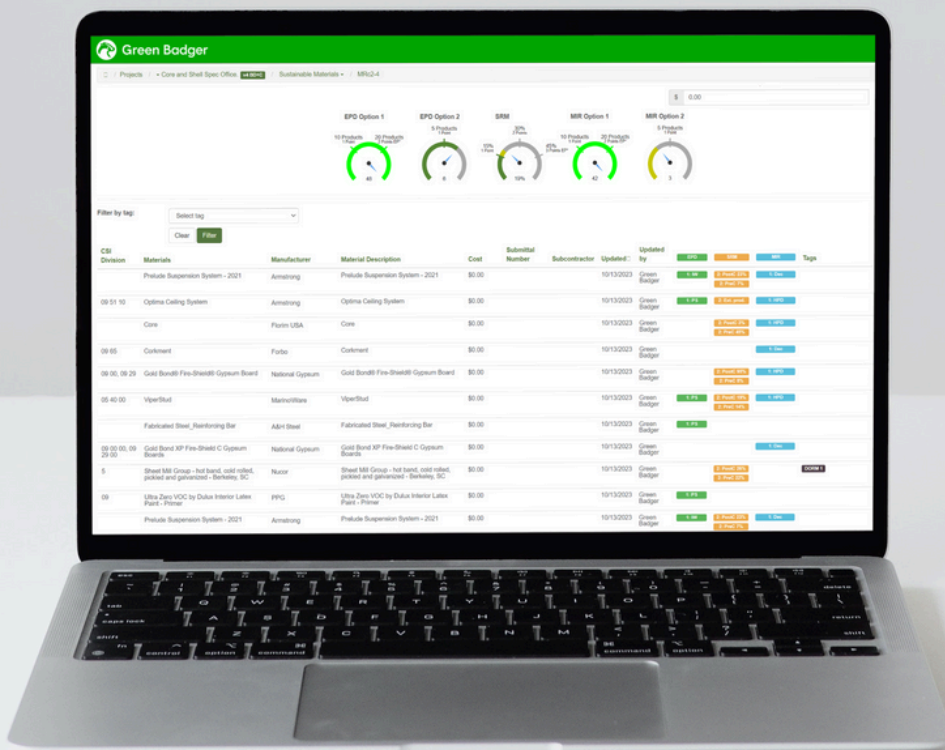


**We do our best to help them figure it out by consistently engaging with teams across the country, diligently reviewing quarterly updates, addendums, CIRs (because what's the point of creating a set of rules/standards if you're not going to change them every three months), and venting/raging/problem-solving with peer groups who feel the same frustrations as the rest of us.**

# About This Guide

What this guide provides is a framework of the product categories that we at Green Badger see the broadest number of manufacturers and product lines with EPDs, HPDs, Cradle to Cradle certifications, Declare labels and anything else you need to earn the EPD and MIR Options 1 and 2.

Use it as a starting point. Hopefully you can find your 20 products in these few categories quickly and easily and get on with your life. The alternative involves scouring databases, reading through 500 page submittals, and earning a PhD in chemistry to determine if a product will help you earn your certification.



# LEED Compliant Products

*By now you should have already opted into LEED v4.1 for the materials credits, AND you know all the nuances of environmental product declarations and the various types of material ingredient reporting. Nice work!*

**Now onto the main course - where should I be looking for products that meet the LEED requirements? The Badger's about to tell you!**

We'll offer a precursor beforehand: the Badger does not endorse, recommend, prefer, sponsor, etc. any of the brands and products listed. Nor is this a comprehensive list of every single product that exists with an EPD or HPD.

What follows are product categories that are found on nearly any construction project, with product types that have multiple brands and product offerings that help earn the LEED MR credits - that's it, nothing more, nothing less. If we missed a brand, sorry, let us know, we'll include it in an update.

Should you look for EPDs/HPDs in other places? Have at it!

But for an easy cheat-sheet of where the Badger would start looking to get to that magic number of 20 – read on.

## CHEAT SHEET



### IEQc4: Low Emitting Materials

There aren't currently a lot of products that comply with Materials and Resources Option 2 optimization requirements.

[CLICK HERE TO DOWNLOAD](#)



## EBOOK

### EPD & MIR Opt 2 Product Guide

There aren't currently a lot of products that comply with Materials and Resources Option 2 optimization requirements. Here's an updated list!

[CLICK HERE TO DOWNLOAD](#)

# Insulation Products

Noise? Use acoustical insulation. Cold? Bundle up that thermal insulation. Condensating pipes? There's insulation for that! Odds are that you have at least 3 types of insulation on your project.

The good news is that there are multiple brands that offer a variety of products chock full of EPDs, HPDs and are compliant with the CDPH standard (so you don't blow your low-emitting credits).

Here's just a sample of what you'll find from Certainteed, International Cellulose Corp, Johns Manville, Knauff and Owens Corning.

*Insulation, insulation, insulation! Batt, rolls, fiberglass, cellulose – the types and uses abound.*



MANUFACTURER	PRODUCT	COMPLIANCE
<b>Certainteed</b>	FIBERGLASS DUCT WRAP INSULATION	<b>EPD, SRM</b>
	FIBERGLASS BLANKET INSULATION	<b>EPD, MIR</b>
	Sustainable Insulation Unfaced & Kraft Faced Batts	<b>EPD, MIR</b>
	Blowing Wool Fiberglass Insulation	<b>EPD, MIR</b>
<b>International Cellulose Corp</b>	K-13 Acoustical/Thermal Insulation System	<b>EPD, SRM, MIR</b>
	Ure-K Acoustical/Thermal Insulation System	<b>SRM, MIR</b>
<b>Johns Manville</b>	Flat ENRGY 3® CGF	<b>SRM</b>
	800 SERIES SPIN-GLAS®	<b>EPD, SRM</b>
	PERMACOTE LINACOUSTIC R-300	<b>EPD, SRM</b>
	1000 SERIES SPIN-GLAS	<b>EPD, SRM</b>
	LINACOUSTIC® RC-HP	<b>EPD</b>

## LEED Compliant Insulation Products continued...

MANUFACTURER	PRODUCT	COMPLIANCE
Knauff	JetStream Ultra Blowing Wool Insulation	EPD, MIR
	Fiberglass Insulation Acoustical Smooth Board	EPD, SRM, MIR
	Knauf Insulation EcoBatt® Insulation with ECOSE® Technology Unfaced Batts	EPD, SRM, MIR
	Knauf Insulation EcoBatt® Insulation with ECOSE® Technology Faced Batts	EPD, SRM, MIR
	Earthwool™ Redi-Klad™ 1000° Pipe Insulation with ECOSE® Technology	EPD, MIR
Owens Corning	EcoTouch Kraft Faced Insulation	EPD, SRM, MIR
	700 Series Fiberglas™ Insulation Faced	EPD, SRM, MIR
	Thermafiber® Mineral Wool Insulation	EPD, SRM, MIR
	FOAMULAR Extruded Polystyrene (XPS )Insulation	EPD, SRM, MIR
	ECOTouch Insulation Unfaced	EPD, SRM, MIR
	700 Series Fiberglas™ Insulation Unfaced	EPD, SRM, MIR
	Fiberglass Pipe Insulation	EPD, SRM, MIR
	Thermafiber UltraBatt Mineral Wool Insulation	EPD, SRM, MIR



### EBOOK

#### BioBased Product Guide

Biobased products meet one of the Leadership Extraction Practices requirements for Sourcing of Raw Materials under LEED v4.1.

[CLICK HERE TO DOWNLOAD](#)

# Flooring Products

**Nearly every major flooring manufacturer has multiple options for you to choose from.** What

was the last project you were on that only had 1 type of flooring? You can find carpet (tiles and broadloom), vinyl, cove base, tile, solid surface and more – all with CDPH compliance as well.

Don't forget the adhesives! You've got a number of products that can help you there. Heck, Laticrete has over 100 HPDs in their product catalogue.

*Note: While you may use 6 different carpet styles, if they are all the same underlying product, then they only count once.* Styles of carpet are not different products. It would have to be a different formula-tion/backing to count as another product.

*You can literally stumble into a pile of EPDs and HPDs with your flooring submittal.*



MANUFACTURER	PRODUCT	COMPLIANCE
<b>American Olean</b>	American Olean Brand Tile - El Paso TX Wall Tile Manufacturing Facility	<b>EPD</b>
	American Olean Brand Tile - Monterrey Mexico Floor Tile Manufacturing Facility	<b>EPD</b>
	American Olean Brand Tile - Muskogee NA Body Tile Manufacturing Facility	<b>EPD, MIR</b>
	American Olean Brand Tile - Fayette AL Quarry Tile Manufacturing Facility	<b>EPD, MIR</b>
	American Olean Brand Tile - Muskogee OK Super White Body Tile Manufacturing	<b>EPD, MIR</b>
<b>Armstrong</b>	Luxury Vinyl Tile (LVT)	<b>EPD, SRM, MIR</b>
	Vinyl Composition Tile (VCT)	<b>EPD, SRM, MIR</b>
	BioBased Tile	<b>EPD, SRM, MIR</b>
	S-799 High Moisture Adhesive for Linoleum and Rubber Tile	<b>MIR</b>
	Interlude, Prelude, & Suprafine XL Suspension Systems	<b>EPD, SRM, MIR</b>



## LEED Compliant Flooring Products continued...

MANUFACTURER	PRODUCT	COMPLIANCE
<b>Beaulieu Commercial</b>	Nexterra Carpet Tile (Nylon 6,6 Face Fiber)	EPD, MIR
	Beaulieu Standard Broadloom (Nylon 6,6 Face Fiber)	EPD, MIR
	Level Hybrid Flooring Tile	EPD
	Level Tile with Nexterra Backing System	MIR
	Nexterra Carpet Tile (Nylon 6 Face Fiber)	EPD, MIR
<b>Bentley Mills</b>	AFFIX Tile - Piece Dyed Nylon 6,6	EPD, MIR
	AFIRMA™ Hardback Tile- Piece Dyed Nylon 6,6	EPD, MIR
	AFFIX Tile - Solution Dyed Nylon 6,6	EPD, MIR
	NexStep Piece Dyed N66	EPD, MIR
	Healthbond 2300 Adhesive	MIR
	High performance PC Broadloom Carpet	EPD, SRM, MIR
<b>Crossville</b>	Procelain Tile	EPD, SRM, MIR
<b>ECORE International</b>	UltraTile	EPD, MIR
	ECOsurfaces	EPD, MIR
	PlayGuard	EPD, MIR
	QT Sound Control	EPD, MIR
<b>Forbo Flooring Systems</b>	Marmoleum Tile 2.0mm and 2.5mm	EPD, MIR
	Colorex SD	EPD, SRM, MIR
	Flotex Sheet	EPD, MIR
	Marmoleum Sheet	EPD, SRM, MIR
	Coral Duo	EPD, MIR
<b>Interface</b>	Modular Carpet Tile Type 6,6 Nylon with GlasBac	EPD, SRM, MIR
	Modular Carpet Tile Type 6 Nylon with GlasBacRE	EPD, SRM, MIR
	Modular Carpet Tile Type 6 Nylon with NexStep	EPD, SRM
	Modular Carpet Tile Needlefelt with Graphlar	EPD, SRM
	Modular Resilient Flooring - LVT	EPD, MIR

## LEED Compliant Flooring Products continued...

MANUFACTURER	PRODUCT	COMPLIANCE
<b>Laticrete</b>	L&M EMERYTOP 400	MIR
	SPARTACOTE FLEX SB	MIR
	SPARTACOTE FLEX SB Low Gloss	MIR
	L&M FGS HARDENER PLUS	MIR
	SPARTACOTE FLEX PURE CLINICAL PLUS	MIR
	PermcOLOR Grout	EPD, MIR
<b>Milliken</b>	Solution Dyed Nylon 66 with Milliken ES Comfort Plus Backing	EPD, MIR
	Milliken Solution Dyed Nylon 6 with Milliken ESP Underscore Backing	EPD, MIR
	Digital Dye Injected Nylon 6 with Milliken ES Comfort Plus Backing	EPD, MIR
	Aquafil Econyl Solution Dyed Nylon 6 with Milliken ES Underscore Backing	EPD
	Milliken Continuous Dyed Nylon 66 Broadloom	EPD, MIR
	Milliken Solution Dyed Nylon 6 with WellBAC Comfort	EPD, SRM, MIR
<b>Shaw Industries</b>	EcoWorx Tile with Nylon Face Fiber	EPD, SRM, MIR
	EcoWorx PX Tile with Nylon Face Fiber	EPD, SRM, MIR
	Residential Broadloom with LifeGuard Backing System	MIR
	Classicbac® PC with NYLON Face Fiber	EPD, MIR
	Engineered Ply-Core Hardwood Flooring	MIR
<b>ClarkDietrich</b>	Mill-Certified Cold-Formed Steel	EPD, SRM, MIR
<b>Concrete</b>	Cement Mortar for tile installation - TCNA (IW) National Readymix (IW)	
<b>Tarkett Commercial</b>	Johnsonite Baseworks Thermoset Rubber Wall Base	EPD, SRM, MIR

# Gypsum Board

You'll find the major national manufacturers here, like American Gypsum, Certainteed, National Gypsum, USG – all with tons of options. Since the uses are different, they can count as separate projects.

Type X? Of course. Fire rated Type X? You're getting warmer! Shaftliner, tile backer, mold resistant, glasmat – if you're not getting excited, go pound another Monster energy drink!

*You could pound a Monster energy drink and put your fist through an EPD with the options you've got in gypsum board!*



MANUFACTURER	PRODUCT	COMPLIANCE
<b>American Gypsum</b>	ClassicRoc Gypsum Wallboard	MIR
	M-Bloc Gypsum Wallboard with Mold and Moisture Resistance	MIR
	M-Glass Glass Mat Gypsum Panels	MIR
	Exterior Soffit Gypsum Sheathing	MIR
	Exterior Gypsum Sheathing	MIR
<b>Certainteed</b>	Type X Gypsum Board Vancouver, British Columbia Facility	EPD, SRM, MIR
	Type X Gypsum Board, Seattle, WA Facility	EPD, SRM, MIR
	Type X Gypsum Board (Montreal Facility)	EPD, MIR
	M2TECH MOISTURE & MOLD RESISTENT GYPSUM BOARD 12.7MM (1/2") (Montreal Facility)	EPD, MIR
	Type X Gypsum Board (Montreal Facility)	EPD, MIR
<b>National Gypsum</b>	Gold Bond XP Fire-Shield Gypsum Boards	EPD, SRM, MIR
	Gold Bond SoundBreak XP Gypsum Boards	MIR
	Gold Bond XP Fire-Shield C Gypsum Boards	MIR
	Gold Bond Fire-Shield C Gypsum Boards	SRM, MIR
	Gold Bond Fire-Shield Gypsum Boards	EPD, MIR
	ProForm Paper Joint Tape	MIR
	Permabase Cement Boards	EPD, MIR
<b>USG</b>	Sheetrock Brand EcoSmart Panels Mold Tough Firecode X	EPD, SRM, MIR
	Sheetrock Brand EcoSmart Panels Firecode 30	EPD, MIR
	Sheetrock Brand EcoSmart Panels Firecode X	EPD, MIR
	Sheetrock Brand Firecode C Panels	EPD, MIR
	Sheetrock Brand Glass-Mat Panels Mold Tough AR Firecode	EPD, MIR

# Ceiling Tile & Grid

Rare is the project that uses one ceiling tile throughout, and if you find you're one EPD short you can always hang a different type in the mechanical room... (the Badger didn't just say that, we'd never suggest such a shameless tactic to pick up a point).

This is another case where the big manufacturers make it easy for you. You have over 100 options to pick from between Armstrong, Certainteed and USG.

*Another great product category where you know you'll have more than one option.*



MANUFACTURER	PRODUCT	COMPLIANCE
<b>Armstrong</b>	Optima/Calla	EPD, SRM, MIR
	Ultima Ceiling System	EPD, SRM, MIR
	Metalworks Torsion Spring	EPD, SRM, MIR
	Dune Ceiling System	EPD, SRM, MIR
	Ultima+	EPD, SRM, MIR
	Mesa Ceiling System	EPD, SRM, MIR
<b>Certainteed</b>	Baroque Ceiling Tile	EPD, MIR
	Cashmere Style Edge Ceiling Tile	EPD, MIR
	Protectone Cashmere Ceiling Tile	EPD, MIR
	Fine Fissured High NRC Ceiling Tile	EPD, SRM, MIR
	Sereno Fine Fissured Ceiling Tile	EPD, SRM, MIR
	Sky Ceiling Tile	MIR
	Symphony m and Rx Symphony m	EPD, SRM, MIR
<b>USG</b>	Mars ClimaPlus Healthcare	EPD, SRM, MIR
	Mars ClimaPlus HRC	EPD, MIR
	Mars ClimaPlus High-NRC	EPD, SRM, MIR
	Mars ClimaPlus	EPD, SRM, MIR
	RADAR™	EPD, SRM, MIR
	RADAR™ Basic	EPD, SRM, MIR
	Radar ClimaPlus High-NRC	EPD, MIR

# Paint Products

We'll skip the recap and just note that you can get literally 25% of the EPD/HPDs you need to earn the credit from paints (closer to 37% for v4.1 EPDs, since they are all third-party verified). While each color of a paint won't count as a separate product, each sheen or type of paint will.

So when you come in with a primer, flat, eggshell, semi-gloss and gloss paint, you've got 5 products helping you out. Throw in some block fillers and direct-to-metal paints and primers and you're practically 50% of the way there!

Don't have gloss paint on your project? There's a mechanical room for that!

*If you missed the Badger blog post tying the Rolling Stones into EPDs and LEED, you can read that here.*



MANUFACTURER	PRODUCT	COMPLIANCE
<b>Benjamin Moore</b>	Ultra Spec 500 Waterborne Interior Paint- all finishes	EPD, MIR
	Eco Spec Interior Latex Paint- all finishes	EPD, MIR
	Ultra Spec HP DTM Acrylic Enamels- Semi Gloss	EPD, MIR
	Multi-Purpose Primer	EPD, MIR
	SCUFF-X Interior- Matte	MIR
	Super Spec Latex Enamel Undercoat Primer and Sealer Coronado	MIR
	Super Kote 5000 Latex Production Block Filler Flat 958 Advance	MIR
	Waterborne Interior Alkyd Paint- All finishes	MIR
<b>PPG</b>	SPEEDHIDE zero Interior -ALL FINISHES	EPD, MIR
	SPEEDHIDE Interior/Exterior Masonry Hi Fill Latex Block Filler	EPD, MIR
	Pitt-Tech® Plus EP DTM	EPD
	SICO Ecosource - ALL FINISHES	EPD, MIR
	Prominence- ALL FINISHES	EPD, MIR
	DULUX® Ultra -ALL FINISHES	EPD, MIR
	DULUX® Lifemaster - ALL FINISHES	EPD, MIR
	PITT-GLAZE® WB1 Pre-Cat Epoxy Semi-Gloss	EPD
	SEAL GRIP Acrylic Universal Primer/Sealer	EPD
	AQUAPON WB EP	EPD

## LEED Compliant Paint Products continued...

MANUFACTURER	PRODUCT	COMPLIANCE
Sherwin Williams	ProMar 200 Zero VOC Latex paint - <i>All Finishes</i>	EPD, MIR
	ProMar 200 Zero VOC Latex Primer	EPD, MIR
	Loxon Concrete & Masonry Primer	EPD, MIR
	PrepRite Block Filler	EPD, MIR
	Pro Industrial DTM Acrylic - <i>All Finishes</i>	EPD, MIR
	Harmony Latex Paint - Semi-Gloss	EPD
	ProMar 400 Zero VOC - <i>All Finishes</i>	EPD, MIR
	Pro Industrial Waterborne Acrylic Dryfall - <i>All Finishes</i>	EPD, MIR
Kelly Moore	Premium Professional Interior Paint and Enamels- <i>All Finishes</i>	EPD, MIR
	AcryShield Premium Exterior Paint and Enamels- <i>All Finishes</i>	EPD, MIR
	DuraPoxy Premium Interior Paint and Enamels- <i>All Finishes</i>	EPD, MIR
	DTM Exterior Enamels, -Eggshell & Semi-Gloss	EPD, MIR
	Kel-Pro Interior Paint and Enamels- all finishes	EPD, MIR



### TEMPLATE

#### Contractor Submittal Example

Before you start building, one big job for contractors is handling construction submittals. They're a big deal for making sure your project's on point, runs on schedule, and doesn't blow your budget. To make your construction business shine, you gotta know what these submittals are, why they matter, the basics of a good template, what goes into them, and how to make the whole process easier.

[CLICK HERE TO DOWNLOAD](#)

# Doors and Hardware

Make sure you're grabbing all the EPDs and HPDs from your door and hardware submittal! We see this one overlooked A LOT – and that's a huge mistake. I haven't been on a project that hasn't had a door in it, and I'm guessing you haven't either.

**All of these products serve different functions, so you can count them all.** Wood doors, metal doors, door frames, hinges, handles, closers, locks, security devices – knock it out of the park here!

You'll see a lot of familiar brands, many under the Assa Abloy umbrella, but there's others as well.

*We're getting close to the end, so don't let the door hit you on the rear on your way out! ...see what we did there.*



MANUFACTURER	PRODUCT	COMPLIANCE
<b>Assa Abloy</b>	Pemco S88 SiliconSeal Adhesive Smoke/Fire Gasket	EPD, SRM, MIR
	Pemco Mortise Aluminum Heavy Duty Geared Hinge	EPD
	Pemco S773 SiliconSeal Adhesive Smoke/Fire Gask	EPD, SRM
	HES 1600 Series Electric Strike	EPD, MIR
	AADG Attach Resistant Opening	EPD, MIR
	Ceco Imperial Hollow Metal Door Polyurethane Core	EPD, SRM
	Curries 747 Door	EPD, SRM, MIR
	Pioneer LW-Series Steel Stiffened Door	EPD, SRM
SecUritron M62 MagnaLock	EPD, SRM, MIR	
<b>Corbin Russwin</b>	IN120 Wifi Electronic Access Control Mortise Lock	EPD, SRM
	CL3300 Series Cylindrical Lock	EPD, SRM
	ED5400 SVR Exit	EPD, SRM
	ED5000 Series Mechanical Exit Device	EPD, SRM
	CL3100 Series Vandal Resistant Lock	EPD, SRM
	ML2000 Series Mortise Lock	EPD, SRM
	ML20900 ECL Electromechanical Mortise Lock	EPD, SRM
	DC8000 Series Door Closer	EPD, SRM

## LEED Compliant Doors and Hardware continued...

MANUFACTURER	PRODUCT	COMPLIANCE
<b>dormakaba</b>	RTS88 Overhead Concealed Closers	EPD
	BEST T Deadbolt Series	EPD, MIR
	ALTERRA ALT50 Fixed Partition with Frameless Door	EPD, MIR
	Automatic Sliding Door Operator ES 200	EPD, MIR
	BEST Rack and Pinion Door Closer EHD9000	EPD, SRM, MIR
<b>Norton Rixon</b>	7500 Series Door Closer	EPD, SRM, MIR
	6000 Series Swinging Door Operator	EPD, MIR
	8000 Series Door Closer	EPD, SRM
	9500 Series Door Closer	EPD, SRM
	5800 Series ADAEZ Door Opener	EPD, SRM
	147 Offset Pivot	SRM, MIR
<b>Sargent</b>	80 Series Mechanical Exit Device	EPD, SRM
	8200 Series Electromechanical Mortise Lock	EPD, SRM
	7900 Series Mortise Lock	EPD, SRM
	Sargent Exit 80 Series 56- Electromechanical	EPD, SRM
	1131 Ruen Series Door Closer	EPD, SRM
	10 Line Cylindrical Lock	EPD, SRM
	8200 Series Mortise Lock with EcoFlex	EPD, SRM
	8200 SERIES MORTISE LOCK	EPD, SRM, MIR
	Harmony Mortise Lock	EPD, SRM
<b>Schlage</b>	Schlage L9000 Series Lock	EPD, SRM, MIR
	L9010 Mortise Lock	EPD, MIR
	Schlage AL Series Lock	EPD
	Schlage ND Series Lock	EPD, MIR
	Schlage B5000 Series Lock	EPD



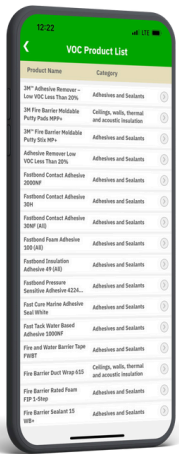
## LEED Compliant Doors and Hardware continued...

MANUFACTURER	PRODUCT	COMPLIANCE
<b>Yale</b>	3000 Series Door Closer	EPD, SRM
	6000 SVR Exit	EPD, SRM
	Yale 4400 Series Door Closer	EPD, SRM, MIR
	6000 Rim Exit	EPD
	8800 Series Mortise Lock	EPD, SRM
<b>Allegion</b>	98/99 Series Exit Device	EPD, SRM, MIR
	IVES Architectural Hinges	EPD, MIR
	LCN 4000 Series Door Closer	EPD, SRM, MIR
	Schlage L9000 Series	EPD, SRM, MIR
	Von Duprin 33A/35A Series Exit Device	EPD, MIR
	Steelcraft L Series Door	EPD, SRM, MIR
	DL Series Doors with Honeycomb Core	EPD, SRM, MIR
<b>Eggers</b>	Interior Flush Wood Doors	EPD, MIR
	Interior Flush Wood Doors with Mineral Core	MIR
	Interior Flush Wood Doors with Structural with Composite Lumber Core	MIR

# LEED v4.1 EPD & MIR Option 2



*There aren't currently a lot of products that comply with Materials and Resources Option 2 optimization requirements. That's why we release updates to keep your teams in the loop when new products hit the market.*

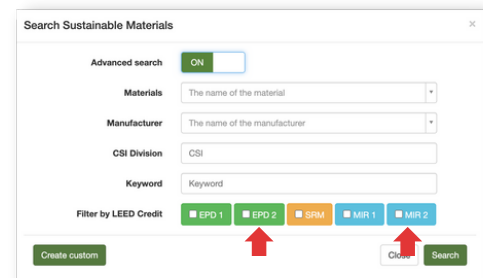


Green Badger's product database has around 90 products that comply with EPD option 2 requirements right now, and around 350 products for MIR option 2. This might seem like a lot, but most of those are Sherwin Williams paints for EPD option 2. This is because each sheen of paint counts as a separate product, and Sherwin Williams has a lot of product lines with many different sheens available.

However, if you're trying to achieve Option 2 LEED credits and need one more product that complies to hit your goals, Green Badger's product database is the perfect place to start!

**As of January 2024**, there are 90+ of products that comply with EPD Option 2 and 350+ of products that comply with MIR Option 2 in Green Badger's Product Database

Green Badger users can now search by LEED Materials & Resources Option 2 credit compliance in our green product and materials database to quickly see which products comply to earn each credit.



## EPD Option 2

1 point under EPD Option 2 could be achieved for selecting 5 compliant products from 3 different manufacturers. See the following compliant products, whose manufacturers developed the required impact reduction analysis and plans (LEED v4.1 credit substitution):

<b>Life Cycle Impact Reduction Action Plan</b>	value at ½ product
<b>Life Cycle Impact Reductions in Embodied Carbon</b>	value at 1 product
<b>Life Cycle Impact Reductions in Embodied Carbon</b> – 10% reduction global warming potential	value at 1.5 products
<b>Life Cycle Impact Reductions in Embodied Carbon</b> – 20% reduction in global warming potential and 5% reduction 2 other impact categories	value at 2 products

\* expiring in 2022 \*\* expiring in 2023

### THERMAL INSULATION (07 21 00)

#### 1.5 Product Weight

- Owens Corning FOAMULAR® NGX™ 150 Extruded Polystyrene (XPS) Rigid Foam Insulation
- Owens Corning FOAMULAR & FOAMULAR NGX 350 & 350 CVI XPS

#### 2 Product Weight

- Owens Corning Thermafiber Formaldehyde-free Mineral Wool Insulation
- Owens Corning Thermafiber SAFB Mineral Wool Insulation - Unfaced
- Owens Corning Thermafiber RainBarrier Continuous Mineral Wool Insulation
- Owens Corning Thermafiber FireSpan Mineral Wool Insulation
- Owens Corning Thermafiber UltraBatt FF
- Owens Corning Thermafiber Safing Formaldehyde Free Mineral Wool

### LOOSE-FILL INSULATION (07 21 23)

#### 1.5 Product Weight

- Advance Fiber Technology Carbon Smart Loose-Fill Cellulose Insulation

### DOOR HARDWARE (08 17 00)

#### 2 Product Weight

- ASSA ABLOY Corbin Russwin ED5000 Series Mechanical Exit Device
- ASSA ABLOY Corbin Russwin IN120 Electronic Access Control Mortise Lock
- ASSA ABLOY Corbin Russwin CL3300 Series Cylindrical Lock
- ASSA ABLOY Sargent 10X Line Cylindrical Lock

### ASPHALT SHINGLES (07 31 13)

#### 1.5 Product Weight

- Malarkey Vista AR Shingle Line

#### 2 Product Weight

- Malarkey Dura-Seal Shingle
- Malarkey Highlander NEX AR Shingle Line
- Malarkey Ecoasis NEX Shingle Line

### CERAMIC TILE PANELS (07 44 00)

#### .5 Product Weight

- Fireclay Tile Recycled Clay Body

## **GYP SUM BOARD** (09 29 00)

### *1.5 Product Weight*

- USG Sheetrock Brand EcoSmart Panels Firecode X

## **ACOUSTICAL CEILINGS** (09 51 00)

### *2 Product Weight*

- USG Mars 7/8 Mars Healthcare High NRC (80/30) Acoustical Panels

## **TILE CARPETING** (09 68 00)

### *.5 Product Weight*

- Milliken Solution Dyed Nylon 6 with WellBAC Comfort\*
- Interface Modular Carpet Tile Type 6 Nylon with GlasBacRE\*

### *2 Product Weight*

- J+J Flooring Kinetex® Modular Tiles\*

## **PAINTS AND COATINGS** (09 91 23)

### *.5 Product Weight*

- Sherwin Williams ProMar 200 Zero VOC Latex Primer\*
- Sherwin Williams ConFlex Block Filler\*
- Sherwin Williams Pro Industrial Pre Catalyzed Waterbased Epoxy\*
- Sherwin Williams Harmony Latex Primer\*\*
- Sherwin Williams Loxon Concrete and Masonry Primer\*\*

## **TILING** (09 30 00)

### *1.5 Product Weight*

- Crossville Porcelain Tile

## **RESILIENT FLOORING** (09 65 19)

### *.5 Product Weight*

- Interface Modular Resilient Flooring, 4.5 MM LVT on Sound Choice Backing\*

### *2 Product Weight*

- Tarkett Premium and Plus ranges homogeneous vinyl flooring\*

## **PARTITIONS** (10 22 23)

### *1 Product Weight*

- 3form Varia Ecoresin\*

## **DECORATIVE GLASS GLAZING** (08 81 13)

### *2 Product Weight*

- 3form Pressed Glass\*
- 3form Chroma Panels\*

## **DOOR ACCESS CONTROLLERS AND OPERATORS** (08 71 00)

### *.5 Product Weight*

- Allegion Von Duprin 98/99 Series Exit Device
- Allegion IVES Architectural Hinges

### *1 Product Weight*

- ASSA ABLOY Sargent 8200 Mortise Lock with EcoFlex Technology

### *2 Product Weight*

- ASSA ABLOY Medeco XT Mortise Cylinder
- Allegion Von Duprin QEL Latch Retraction Kit
- Norton 6011 Series Door Operator
- Allegion Falcon MEL Latch RetractionKit

## **PLUMBING FIXTURES** (22 42 00)

### *1.5 Product Weight*

- Kohler Co Highcliff Toilet\*

## **FLUSHOMETERS** (22 42 43)

### *1 Product Weight*

- Sloan Diaphragm Flushometers
- Sloan Piston Flushometers

### *1.5 Product Weight*

- Sloan Sensor Flushometers



## MIR Option 2

Use products that have a compliant material ingredient optimization report or action plan. Use at least 5 permanently installed products sourced from at least three different manufacturers.

<b>Material Ingredient Screening and Optimization Action Plan</b>	value at ½ product
<b>Advanced Inventory &amp; Assessment</b>	value at 1 product
<b>Material Ingredient Optimization</b>	value at 1.5 products

The following list is not meant to be comprehensive – there are 350+ products in the Green Badger database that comply with MIR Option 2 requirements. The sample below represents some of the more popular products used in Green Badger projects.

### **STEEL** (05 31)

#### *1 Product Weight*

- ASC Steel Deck

### **REBAR** (05 41)

#### *1 Product Weight*

- Nucor Bar Mill Group Rebar

### **INSULATION** (07 00)

#### *1 Product Weight*

- International Cellulose K13 Acoustical Thermal Insulation

### **ROOFING & MEMBRANES** (07 52 & 07 54)

#### *1 Product Weight*

- Soprema Bituminous Waterproofing Membranes
- Hertalan EPDM

### **ENTRANCE GRID SYSTEM** (12 48)

#### *1.5 Product Weight*

- Construction Specialties Gridline

### **CEILINGS** (09 54)

#### *1.5 Product Weight*

- Rockfon Sonar, Radar
- Lindner LMD Metal Ceiling
- Integra Metal Ceiling Panels

### **WINDOWS** (08 51)

#### *1.5 Product Weight*

- Heroal Windows

### **ALUMINUM SYSTEMS** (08 51 & 08 81)

#### *1 Product Weight*

- Kawneer 1600 Wall System

#### *1.5 Product Weight*

- Kawneer Aluminum Façade & Sliding Systems

### **HARDWARE** (08 71)

#### *1 Product Weight*

- Pemko Perimeter Gasketing

### **FABRICS/WALL COVERINGS** (09 72)

#### *1.5 Product Weight*

- Carnegie Xorel

### **FIRESTOP** (07 84)

#### *1 Product Weight*

- Hilti Firestop

### **SHADE SYSTEMS** (10 71 & 12 24)

#### *1 Product Weight*

- Mecho

#### *1.5 Product Weight*

- Kawneer Versoleil Sun Control Systems

## GLASS & GLASS PARTITIONS (08 81)

### 1 Product Weight

- AGC Float Glass
- Guardian LamiGlass
- Guardian Sputter Coated Float Glass

### 1.5 Product Weight

- AGC Patterned Glass
- AGC Pyrobel Glass
- Guardian
- Lindner



## ADHESIVES (09 65)

### 1 Product Weight

- Forbo Sustain
- WF Taylor Resilient Flooring Adhesive
- XL Brands - various

### 1.5 Product Weight

- Forbo Sustain
- Henkel Loctite HB S Purebond Line
- Shaw S150 Spray Adhesive
- Tarkett Resilient Flooring & Cove Base Adhesive
- WF Taylor Adhesives

## CARPET (09 68)

### 1 Product Weight

- EF Contract (J&J) Kinetex
- Mohawk Ecoflex
- Shaw EcoWorx

### 1.5 Product Weight

- Bentley Mills Affix, Afirma, EliteFlex
- Bentley Mills Tile & Broadloom
- Interface CQuest™ Bio and Biox
- Modulyss Ecoback/Comfortback
- Patcraft (Shaw) EcoWorx® Tile Carpets
- Tandus Centiva Powerbond Ethos Cushion
- Milliken Wellbac

## ACCESS FLOORS (09 69)

### 1 Product Weight

- Concore Tate Access Floor Panel
- Kingspan Access Floor Panels

### 1.5 Product Weight

- Linder

## PAINTS & COATINGS (09 91)

### .5 Product Weight

- Sherwin Williams Emerald line
- Sherwin Williams Loxon Concrete & Masonry Primer
- Sherwin Williams Preprite ProBlock
- Sherwin Williams Preprite Block Filler
- Sherwin Williams ProMar 200 Zero VOC line

## RESILIENT FLOORING (09 65)

### 1 Product Weight

- Mannington Mills Rubber Tile
- Tarkett Rubber Flooring

### 1.5 Product Weight

- Gerflor Resilient Flooring
- Johnsonite Vinyl Wall Base
- Mondo (Artigo) Rubber Flooring
- Nora Noracare, Noraplan Standard
- Tarkett Linoleum & Base

## TILE (09 30)

### 1 Product Weight

- Crossville

## DOOR & WALL PROTECTION (10 26)

### 1.5 Product Weight

- Construction Specialties Acrovyn 4000
- Tarkett/Johnsonite Baseworks Thermoset Rubber Wall Base

# Summary



*For the last time, if you haven't opted into LEED v4.1 for the materials credits, go do so immediately! Use the product categories above as a quick-start guide to finding LEED compliant products without having to go through 1000 submittals.*

Heck, if the Badger was to crap out a repeatable list of products to earn the EPD and MIR Option 1 credits, it may look something like this:

1. Primer
2. Flat paint
3. Eggshell paint
4. Semigloss paint
5. Gloss paint
6. DTM Paint
7. Carpet 1
8. VCT 1
9. Thinset mortar
10. Grout
11. Wood door
12. Metal door
13. Door hinges
14. Door locks
15. Type X gypsum
16. Fire rated Type X gypsum
17. Mold-resistant gypsum
18. Tile backer
19. Ceiling tile 1
20. Ceiling tile 2
21. Thermal insulations
22. Acoustical insulation

And you're done. Lather, rinse, repeat. Heck, all those EPDs are third party verified, so you really could have stopped sooner - but don't forget there's an exemplary performance point at 40. If all this LEED paperwork makes you feel nauseous, head to the bathroom, where you'll find dozens of options from Kohler, Sloan and Toto to pick up a few more compliant products.